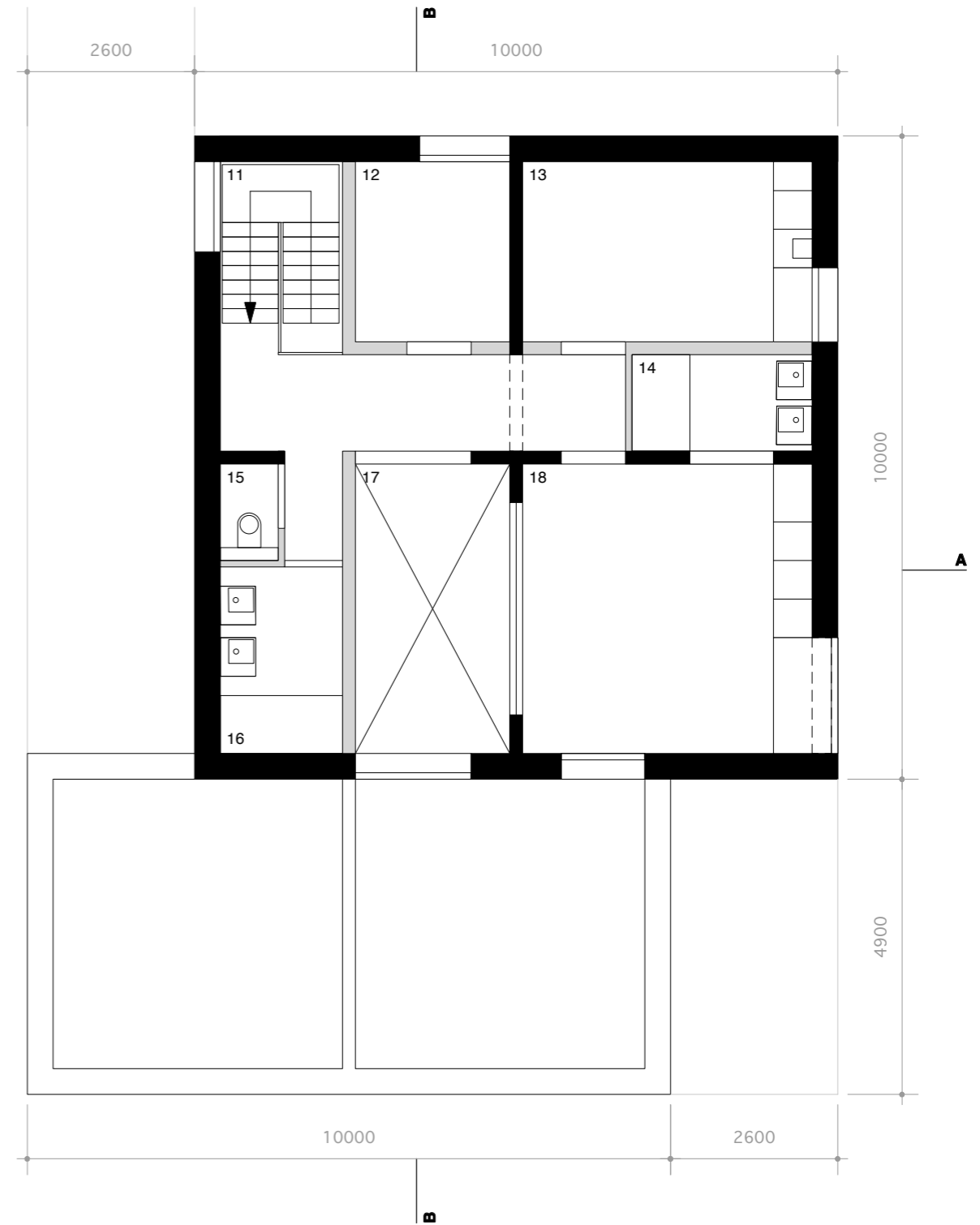
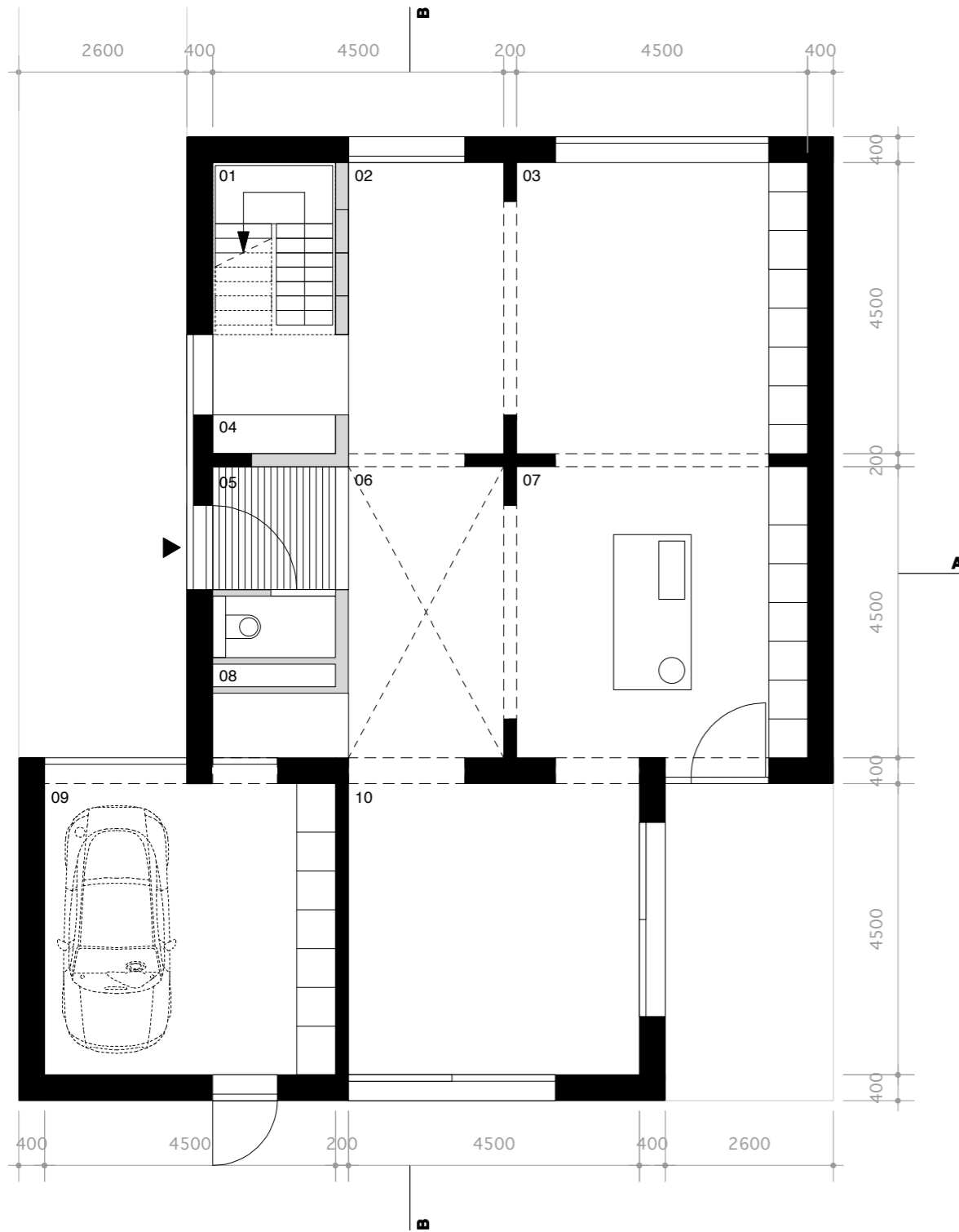




6 square house kavel 18



begane grond

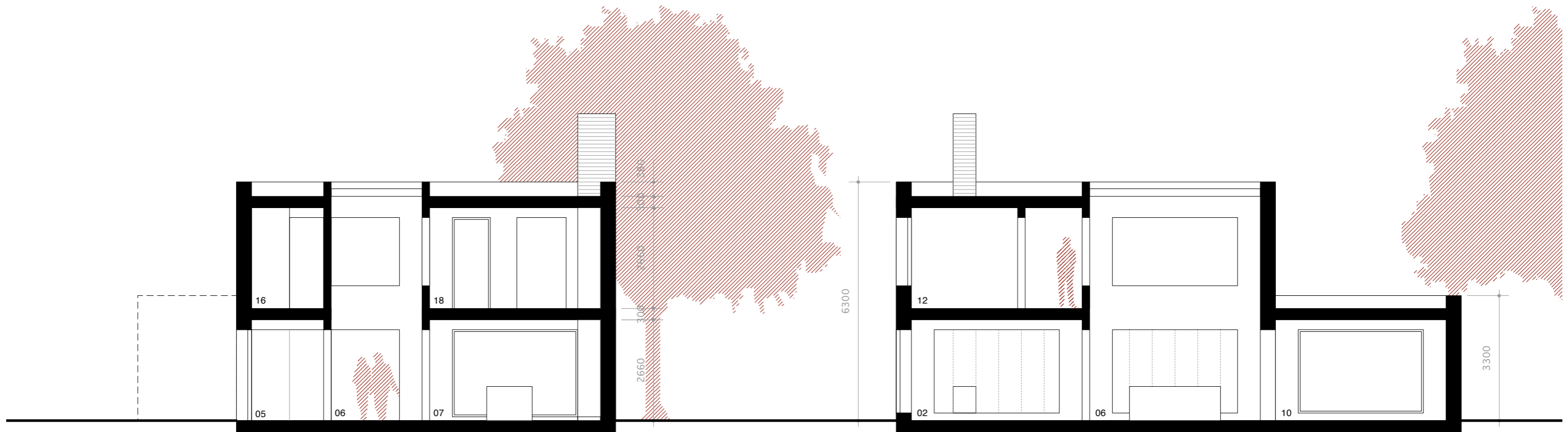
01 trappenhuis, garderobe	8.2m ²
02 wonen/eten	11.8m ²
03 wonen/eten	20.6m ²
04 garderobe	1.1m ²
05 vestibule	4.0m ²
06 intermediair	12.9m ²
07 keuken	21.8m ²

nivo 1

11 trappenhuis, gang	16.7m ²
12 slaapkamer 3	6.7m ²
13 slaapkamer 2	12.2m ²
14 badkamer 1	4.2m ²
15 toilet	1.4m ²
16 badkamer 2	5.5m ²
17 vide intermediair	10.8m ²



6 square house kavel 18

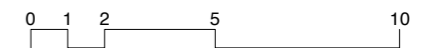


doorsnede A

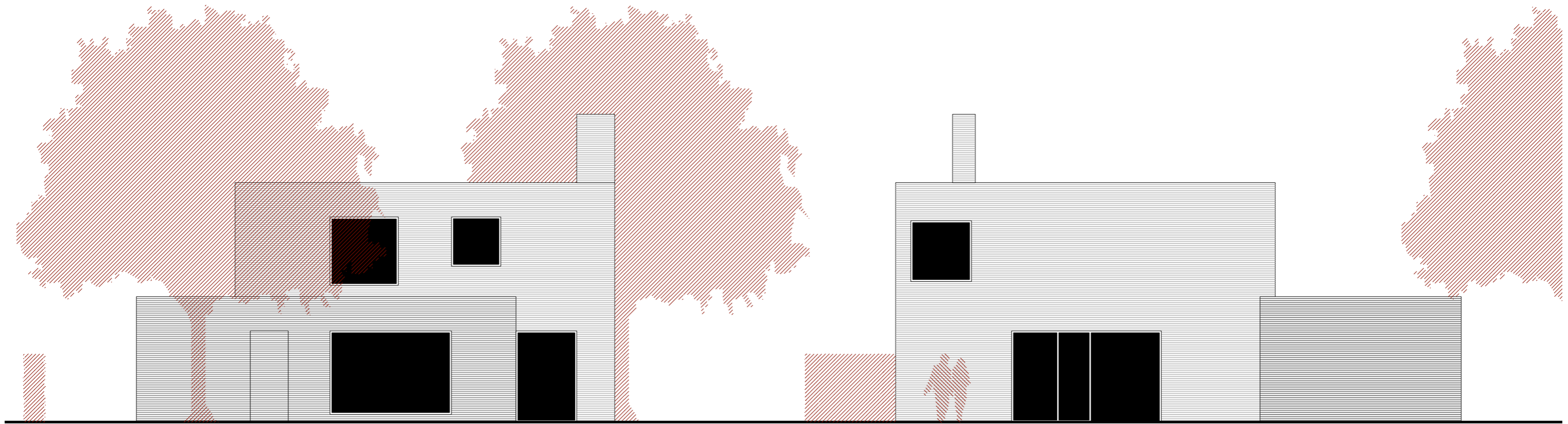
- 05 vestibule
- 06 intermediair
- 07 koken
- 16 badkamer 2
- 18 slaapkamer 1

doorsnede B

- 02 wonen/eten
- 06 intermediair
- 10 zitten
- 12 slaapkamer 3

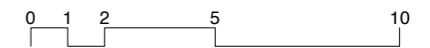


6 square house kavel 18



tuingevel [zuid]

westgevel



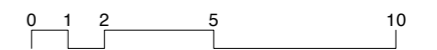
materiaalengevel:
gevel - houten latten, western red cedar naturel
raamkozijnen - hout naturel
dichte deuren - houten latten, western red cedar naturel
garagepoort - houten latten, western red cedar naturel
dak - grind naturel
schoorsteen - houten latten, western red cedar naturel

6 square house kavel 18



straatgevel [noord]

oostgevel



materiaal gevel:
gevel - houten latten, western red cedar naturel
raamkozijnen - hout naturel
dichte deuren - houten latten, western red cedar naturel
garagepoort - houten latten, western red cedar naturel
dak - grind naturel
schoorsteen - houten latten, western red cedar naturel